



This QC11Y-16x12000 Hydraulic Guillotine Shearing Machine is the most biggest shearing machine at Asia, the Max. Cutting thickness is 16mm, the Max. cutting length is 12000mm, motorized back gauge, motorized blade clearance adjusting, with crane lift to feed the sheet, with sheet supporting and loading system. PLC control, knock down structure.

This machine is special designed for cutting the long working pieces, such as the truck beam, lighting pole, bridge beam.

Max. Lifting weight is 5 tons.

This type long shearing length machine is designed to instead of the flame cutting machine to shearing the long sheet, compared with the flame cutting machine, it can save lot of working time, 80% energy. The most important is the smooth shearing edges, it will help to save lot of sheet plate.

Shearing thickness: 16mm

Shearing width: 12000mm

Plate tensile strength: 450 N/mm²

Shearing angle: 0.5°-2°

Back gauge range: 20-1000mm

Blade length: 12300mm (1025mm x 12)

Throat depth: 80mm

Blade material: 6CrW2Si

Main motor power: 2x45 Kw,

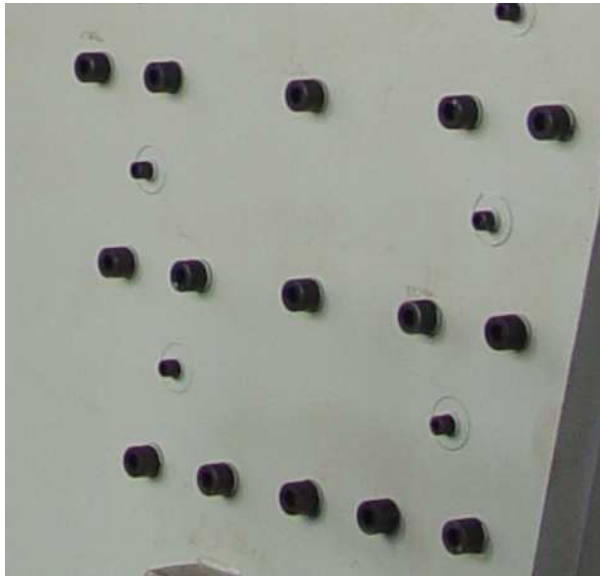
Strokes: 3-12 n/min

Overall Dimension: 13300mm x 4300mm x 5800mm (L x W x H)

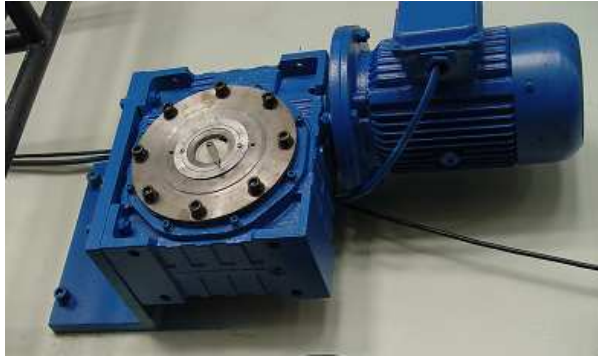
Weight: about 170 tons



control panel with touch screen together with the foot pedal to control the strokes ,it can placed at any position around the main structure of the machine, it's convenience for the operator to operate the machine.



Special designed jointing way to protect the machine with a high rigidity and stability during the shearing period.



Motorized blade clearance adjusting system, be adjusted through operating the PLC, convenience to adjust the blade gap according the different sheet thickness.



Bask side sheet loading system,



Transferring rollers for heavy sheet



Heavy duty bar to protect the hold downs avoiding be collided by the sheet during the feeding time





